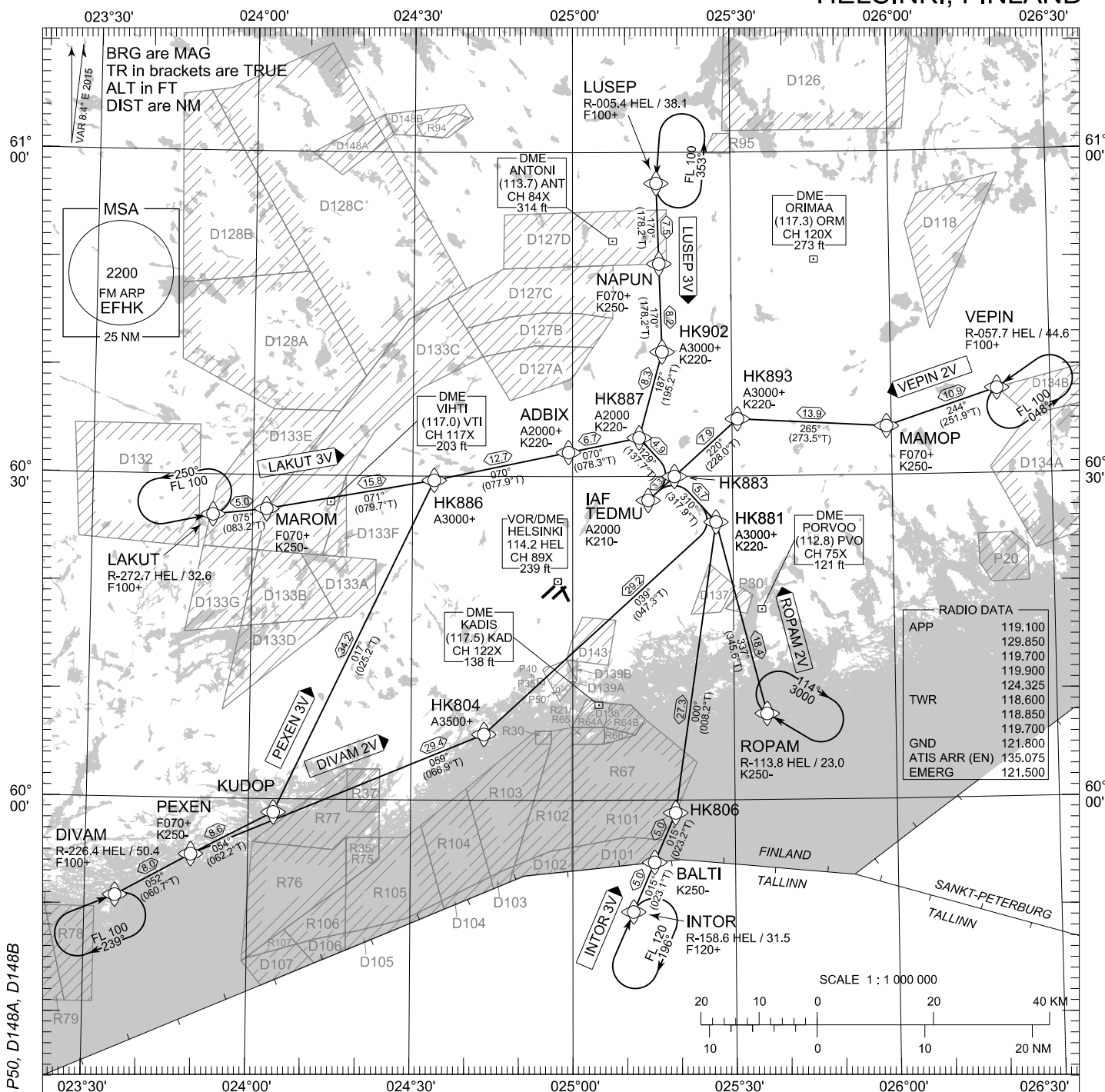


TRANSITION ALT
5000

CHG: all RTE, ADDN P35, P40, P50, D148A, D148B



DIVAM 2V INTOR 3V LAKUT 3V LUSEP 3V PEXEN 3V ROPAM 2V VEPIN 2V

RCF: SELECT TRANSPONDER CODE 7600.

RNAV STAR HAS BEEN GIVEN AND ACKNOWLEDGED:
FOLLOW THE STAR TO THE RESPECTIVE RWY AND
EXECUTE IAP AND LAND.

DURING RADAR VECTORING BEFORE IAF:
PROCEED TO ROPAM HLDG USING LAST ASSIGNED
AND ACKNOWLEDGED ALT/FL OR MHA IF HIGHER.
LEAVE HLDG ACCORDING TO CURRENT FLIGHT PLAN
ETA, USE RNAV STAR TO JOIN IAP AND EXECUTE IAP
FOR LAST ACKNOWLEDGED RWY.

AIRCRAFT HAVING TELEPHONE, CALL +358 9 8277 3324.

ATC WILL GIVE DESCENT CLEARANCES.

CD OPS: BY ATC CLR IF TFC PERMITS. PLAN CD PATH ACCORDING TO STAR.

EFHK RNAV STAR RWY 22R										
RTE NAV SPEC	SEQ NR	P/T	WPT		MAG	GEO TR	DIST NM	Turn Direction	Constraints	
			ID	Flyover					LVL	Speed
DIVAM 2V RNAV 1 or P-RNAV	010	IF	DIVAM	-	-	-	-		F100+	
	020	TF	PEXEN	-	052°	060.7°T	8.0		F070+	K250-
	030	TF	HK804	-	059°	066.9°T	29.4		A3500+	
	040	TF	HK881	-	039°	047.3°T	29.2	L	A3000+	K220-
	050	TF	HK883	-	310°	317.9°T	5.7	L		
	060	TF	TEDMU	-	219°	227.8°T	3.3		A2000	K210-

INTOR 3V RNAV 1 or P-RNAV	010	IF	INTOR	-	-	-	-		F120+	
	020	TF	BALTI	-	015°	023.1°T	5.0			K250-
	030	TF	HK806	-	015°	023.2°T	5.0			
	040	TF	HK881	-	000°	008.2°T	27.3	L	A3000+	K220-
	050	TF	HK883	-	310°	317.9°T	5.7	L		
	060	TF	TEDMU	-	219°	227.8°T	3.3		A2000	K210-

LAKUT 3V RNAV 1 or P-RNAV	010	IF	LAKUT	-	-	-	-		F100+	
	020	TF	MAROM	-	075°	083.2°T	5.0		F070+	K250-
	030	TF	HK886	-	071°	079.7°T	15.8		A3000+	
	040	TF	ADBIX	-	070°	077.9°T	12.7		A2000+	K220-
	050	TF	HK887	-	070°	078.3°T	6.7	R	A2000	K220-
	060	TF	HK883	-	129°	137.7°T	4.9	R		
	070	TF	TEDMU	-	219°	227.8°T	3.3		A2000	K210-

LUSEP 3V RNAV 1 or P-RNAV	010	IF	LUSEP	-	-	-	-		F100+	
	020	TF	NAPUN	-	170°	178.2°T	7.5		F070+	K250-
	030	TF	HK902	-	170°	178.2°T	8.2		A3000+	K220-
	040	TF	HK887	-	187°	195.2°T	8.3	L	A2000	K220-
	050	TF	HK883	-	129°	137.7°T	4.9	R		
	060	TF	TEDMU	-	219°	227.8°T	3.3		A2000	K210-

PEXEN 3V RNAV 1 or P-RNAV	010	IF	DIVAM	-	-	-	-		F100+	
	020	TF	PEXEN	-	052°	060.7°T	8.0		F070+	K250-
	030	TF	KUDOP	-	054°	062.2°T	8.6	L		
	040	TF	HK886	-	017°	025.2°T	34.2	R	A3000+	
	050	TF	ADBIX	-	070°	077.9°T	12.7		A2000+	K220-
	060	TF	HK887	-	070°	078.3°T	6.7	R	A2000	K220-
	070	TF	HK883	-	129°	137.7°T	4.9	R		
	080	TF	TEDMU	-	219°	227.8°T	3.3		A2000	K210-

ROPAM 2V RNAV 1 or P-RNAV	010	IF	ROPAM	-	-	-	-			K250-
	020	TF	HK881	-	337°	345.6°T	18.4		A3000+	K220-
	030	TF	HK883	-	310°	317.9°T	5.7	L		
	040	TF	TEDMU	-	219°	227.8°T	3.3		A2000	K210-

VEPIN 2V RNAV 1 or P-RNAV	010	IF	VEPIN	-	-	-	-		F100+	
	020	TF	MAMOP	-	244°	251.9°T	10.9		F070+	K250-
	030	TF	HK893	-	265°	273.5°T	13.9	L	A3000+	K220-
	040	TF	HK883	-	220°	228.0°T	7.9			
	050	TF	TEDMU	-	219°	227.8°T	3.3		A2000	K210-

RNAV Holdings							
ID	INBD TR	INBD MAG	Turn Direction	MAX IAS	MNM HLDG LVL	TIME	DIST NM
DIVAM	067.4°T	059°	Right	230 KT	F100	1 MIN	-
INTOR	023.5°T	016°	Right	230 KT	F120	1 MIN	-
LAKUT	077.9°T	070°	Left	230 KT	F100	1 MIN	-
LUSEP	181.3°T	173°	Left	230 KT	F100	1 MIN	-
ROPAM	302.0°T	294°	Right	230 KT	A3000	1 MIN	-
VEPIN	236.1°T	228°	Left	230 KT	F100	1 MIN	-

WPT COORD
SEE PAGE EFHK AD 2.15 - 1